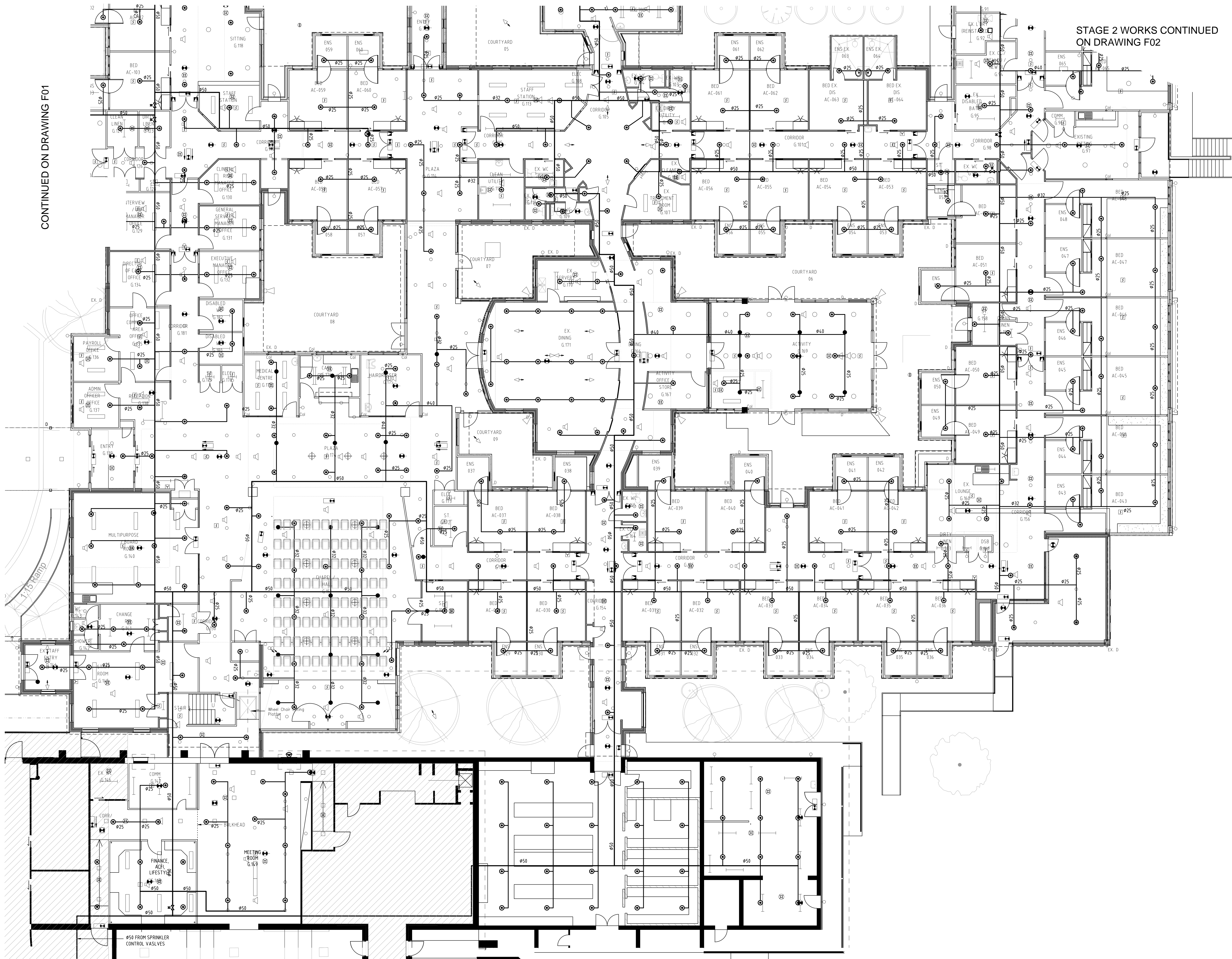


CONTINUED ON DRAWING F02

STAGE 2 WORKS CONTINUED
ON DRAWING F02

CONTINUED ON DRAWING F01

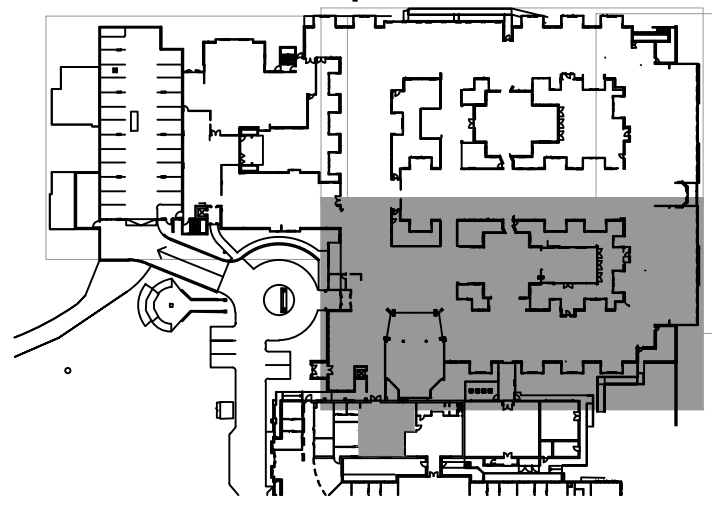


LEGEND:

- BELOW CEILING PENDENT SEMI RECESSED RESIDENTIAL SPRINKLER
- CEILING SPACE SPRINKLER 10mm, 79°C BRONZE FAST RESPONSE SPACED IN ACCORDANCE WITH LIGHT HAZARD

DESIGN BASIS:

RESIDENTIAL AREAS:
DESIGNED IN ACCORDANCE WITH AS218.4
UTILISING RESIDENTIAL TYPE SPRINKLERS
SPACED IN ACCORDANCE WITH
MANUFACTURER'S SPECIFICATION
SPRINKLERS USED - GLOBE MODEL GL4910
PENDENT SEMI RECESSED RESIDENTIAL WITH
MAXIMUM SPACING 6.1m x 6.1m APART & 3.05m
OFF WALLS
CEILING SPACES:
DESIGNED IN ACCORDANCE WITH AS218.1
LIGHT HAZARD UTILISING 10mm FAST
RESPONSE SPRINKLERS SPACED TO MAXIMUM
4.6m x 4.6m & 2.3m OFF WALLS



KEY PLAN

RAPID FIRE PREVENTION

UNIT 22, 12 EDINA ROAD
FERNTREE GULLY 3156
PH: 9752 2173
PH: 9752 3489

REVISIONS

NO.	DETAILS	DATE
A	ISSUED FOR APPROVAL	26.04.12
B	AS INSTALLED	02.11.12
C	AS INSTALLED PIPE SIZES ADDED	26.03.14
D	STAGE 2 AS INSTALLED	29.05.14
E	STAGE 2 AS INSTALLED	23.06.14

PROJECT

ASSISI CENTRE
AGED CARE & EARLY RETIREMENT
230 ROSANNA ROAD
ROSANNA

TITLE

FIRE SPRINKLER SYSTEM
GROUND FLOOR
PART 3

Scale 1:100	Date MARCH 2012	CAD File No.
Design- NS	Drawn- NS	JOB No- 1218
DRAWING No-		REV-
SHEET SIZE - B1	F03	D

AS INSTALLED